

Sterilization, Hygiene & Maintenance



Biosecurity 100%, Reliable, Economical



ms

ms



Link to product videos

OPTIMIZED

for efficient and faster work processes

FLEXIBILITY

for better cycle selection

LARGE CAPACITY

for practices with a high volume of work

ERGONOMIC

for greater ease of use



HIGH BIOSECURITY STANDARDS

for your peace of mind

MODULAR LEGS

for installation in smaller spaces (depths of 45 cm)

ANTI-DUST FILTER

for extended service intervals

CUTTING-EDGE DESIGN

for simple cleaning of the equipment and a modern appearance

Safe, easy and cost-effective sterilization

The new **MS** provides dentists with a high-quality yet affordable sterilizer, which prioritises biosecurity and cost-effective running, as well as speed and flexibility. The MS has been developed in line with US standard ANSI/AAMI ST55:2010 for table-top steam sterilizers.



High biosecurity standards

Guaranteed by the closed-door drying process with anti-bacterial filters and the use of clean water in each cycle.



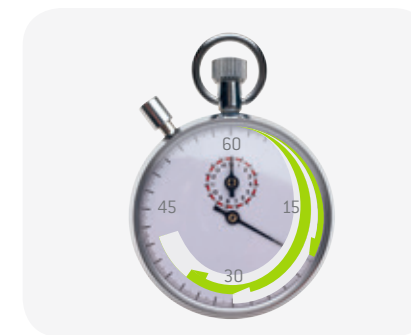
Flexibility and time-saving

The MS has cycles for both packaged and unpackaged products, with an automatic drying process.



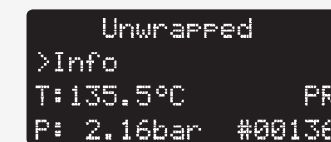
Large capacity

With its 22-litre chamber and room for five trays, the MS offers greater load capacity for practices with high volume of work.



Optimized workflow

Program the cycle to start at a set time to improve the efficiency of your workflow.



Safety first

Pressure and temperature controlled mechanically and electronically.



Ergonomic

The automatic filling and draining functions for the water tanks and the automatic door lock improve ergonomics and save you time.

Technical data

Pictures are for illustrative purposes only. Additional equipment and accessories shown are not included as standard.

MS sterilization cycles

	Unwrapped	Wrapped	Gentle
Temperature	134 °C	134 °C	121 °C
Holding time	6'	6'	15'
Total cycle duration*	21 – 25'	38 – 62'	55 – 59'
Max load	4 kg of unwrapped instruments	1 – 3 kg of wrapped instruments**	1 kg of wrapped heat-sensitive instruments or 4 kg of unwrapped instruments

* Total cycle duration – the times quoted are for the 220 V model and vary depending on the initial conditions of the chamber (hot – cold).

The duration of the cycle may vary depending of the type and weight of the load, voltage, etc.

** The default drying guarantees the sterilization and drying of 3 kg in 62' total time, placing 1 kg per tray.

The drying time may be manually reduced when processing 1 kg thus obtaining a total cycle time of 38'.



Type:	MS-22	
Chamber size:	22 l	
Power supply:	200 – 240 Vac 50/60 Hz; 8,75 A	100 – 125 Vac 50/60 Hz; 15 A
Power consumption:	1.75 kW	1.6 kW
Dimensions overall (W x H x D):	450 x 435 x 599 mm	
Weight (empty):	38 kg	
Mean sound levels (L _{WA}):	63 dB	
Main/Used water tanks:	4 / 3.5 l	
Working range:	7 cycles	
Usable space in chamber (W x H x D):	195 x 195 x 390 mm	
Connection type:	Serial port for printer + automatic water filling connection (optional)	

MS sterilizers were designed, certified and validated with the most stringent Directives and Standards:

93/42/EEC	Medical Device Directive	ANSI/AAMI ST55:2010	Table-top steam sterilizers	EN 61010-1	Safety requirements
97/23/EEC	Pressure equipment Directive	EN 61326-1	Electromagnetic compatibility	EN 61010-2-040	Specific requirements for steam sterilizer

W&H Sterilization Srl.
Via Bolgara, 2
24060 Brusaporto (BG), Italy
t + 39 035-66 63 000
f + 39 035-50 96 988
office.sterilization@wh.com
wh.com